

HorizonDataSys

# Drive Cloner Rx v6.0

UserManual



©Horizon DataSys. Copyright 2015. All Rights Reserved  
Last Updated on November 9, 2015

# Table of Contents

<b>Introduction</b> .....	<b>3</b>
<b>Chapter 1: Installation and Setup</b> .....	<b>8</b>
Minimum System Requirements .....	8
Product Activation .....	9
<b>Chapter 2: Backup Partitions, Disks, Files and Folders</b> .....	<b>11</b>
Backing Up Partitions and Disks .....	11
Backing Up Files and Folders .....	13
Clone Hard Disk .....	14
<b>Chapter 3: Restoration</b> .....	<b>15</b>
Restoring Partitions or Disks .....	15
Restoring Files and Folders .....	16
<b>Chapter 4: Exploring Backup Images</b> .....	<b>18</b>
Open Backup Image .....	18
Validating Backup Images .....	20
<b>Chapter 5: Create Recovery Media</b> .....	<b>21</b>
Bootable CD/DVD .....	21
ISO File .....	23
Bootable USB Flash Drive .....	24
<b>Chapter 6: Uninstalling</b> .....	<b>25</b>
<b>Chapter 7: Product Limitations</b> .....	<b>26</b>
Terms and Conditions .....	26
Limitations .....	27
<b>Chapter 8: Support Resources</b> .....	<b>28</b>

# Introduction

Thank you for choosing Drive Cloner Rx. This User Guide is provided to give you a quick overview of the basic features of Drive Cloner. If you're still unable to find the information you're looking for, you can find additional resources and contact methods at the end of this document.

Drive Cloner Rx is an affordable and reliable computer disk imaging utility designed to protect your computer from important data losses, providing the ability to backup files, folders or the entire contents of your hard disks to image files which can later be used for file recovery or system recovery.

Drive Cloner Rx is an ideal solution for computer disaster recovery. If your computer is no longer accessible due to corruption of the computer's file system or system files, and you have previously created a disk image file, you will be able to use the image file to restore the entire computer. If the hard disk is physically damaged, you can use the image file to restore the entire system to a new hard disk.

Drive Cloner Rx is a simple and effective file recovery solution. If you lose a file and don't have a dedicated file backup, you can use Drive Cloner Rx to explorer a backup image to extract the desired file from the image file.

Drive Cloner Rx can also be used to transfer a computer's entire operating system, with programs and data files intact, to a new computer or to a new hard disk.

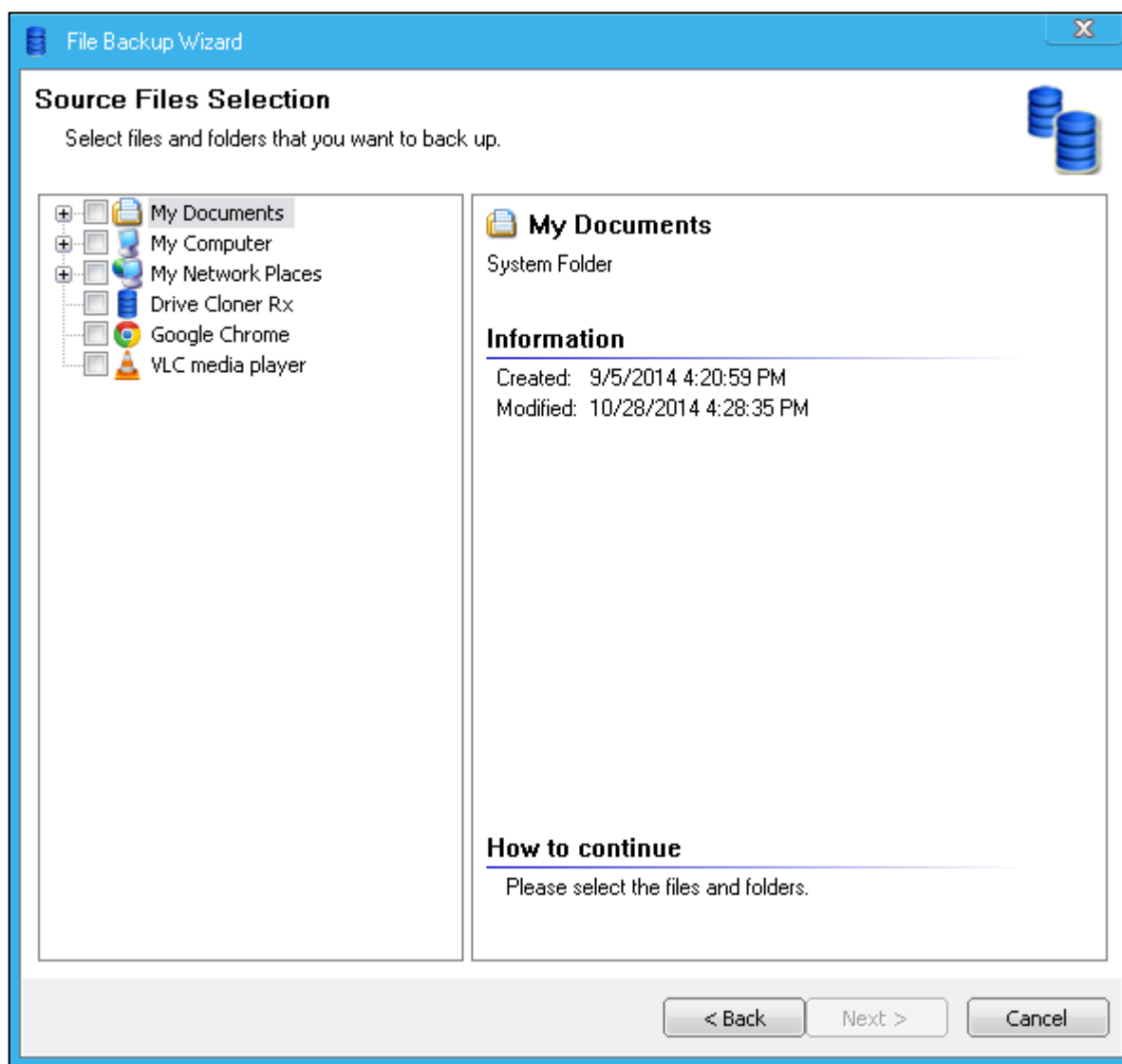
## Drive Cloner Rx Product Highlights:

- Supports Windows 2000/XP/Vista/7/8.1
- Supports backup to and restore from USB Drives.
- Supports restore from CD ROM.
- Backup entire disk while system is online – no interruption to the users while work is in progress.
- Full, differential and incremental backup selections.
- Automatic backup with scheduled jobs.
- File backup only.
- Disk cloning.
- Backup image validation.
- Bootable recovery media builder.
- Mount backup image files as virtual drives.
- Move or resize target partition before restoring an image.

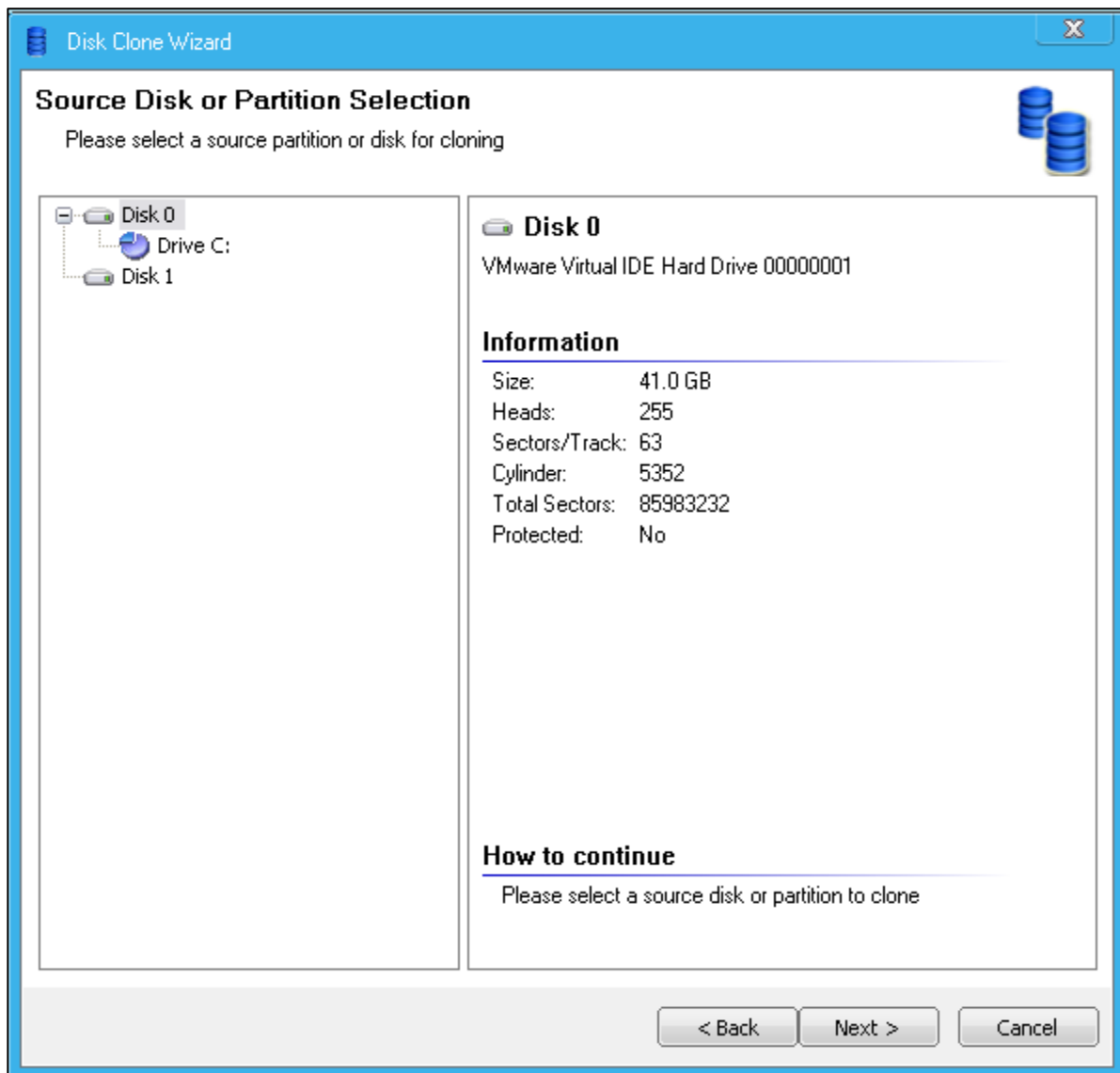
## Program Functions

Drive Cloner Rx 6.0 has four main functions:

**Backup Disks/Partitions/Files/Folders:** This is the most common task for Drive Cloner Rx. This allows the user to create full, partial and/or incremental backups of the disks, partitions, or specific files and folders.



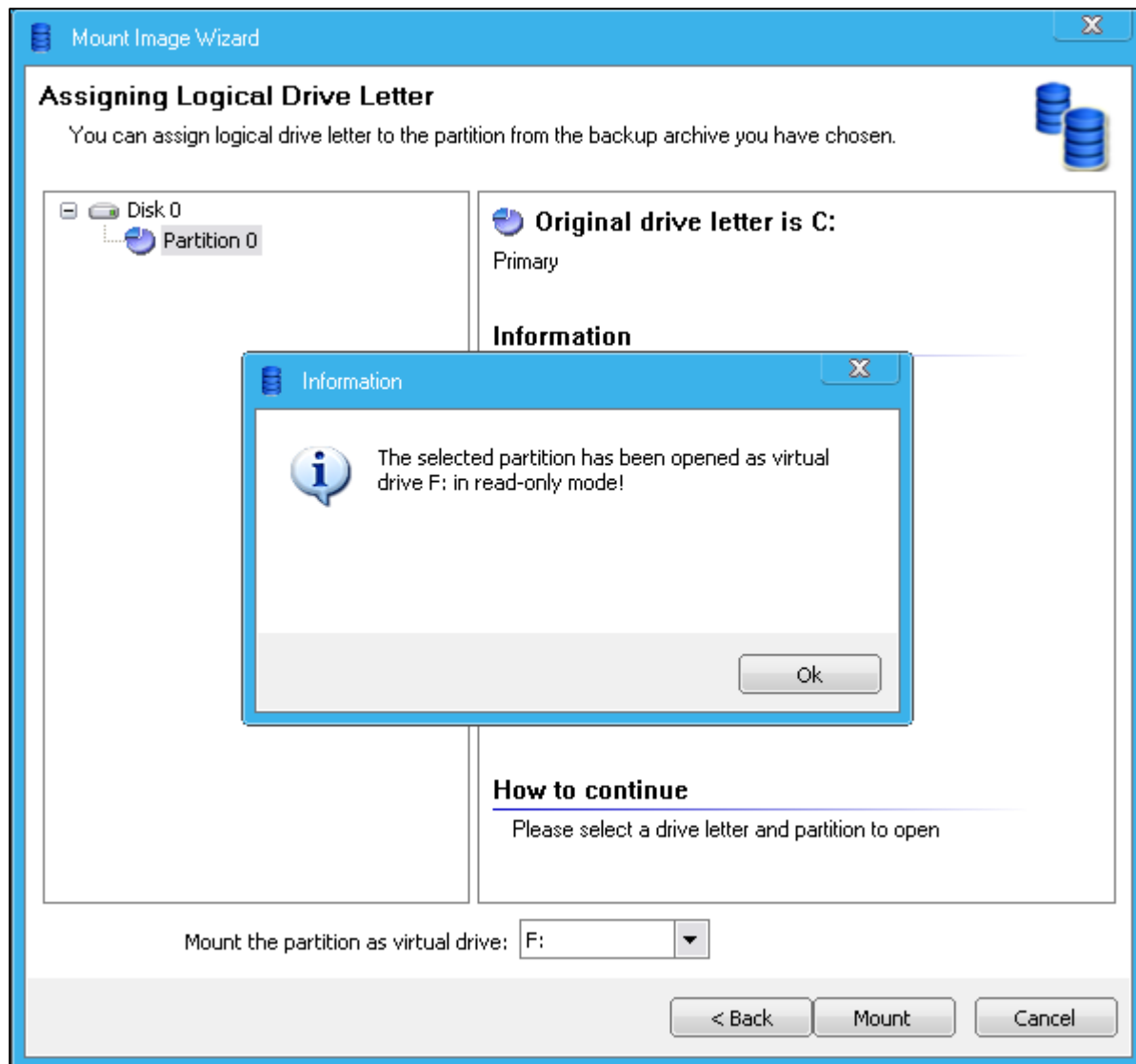
**Clone Disk:** Choosing to clone the disk drive will capture all the files and folders as is on the selected disk, allowing the user to create a carbon copy of the selected drive at the time the clone was made.



**Create Bootable Recovery Media:** Create a bootable CD/DVD, ISO File, or Recovery USB Flash Drive to restore the computer in case the system fails to start up.



**Open Backup Image:** Open any backup image you have stored as a virtual drive. Drag and Drop files as you need them.




# Chapter 1: Installation and Setup

## Minimum System Requirements

Verify that the system meets the following minimum requirements before attempting to install Drive Cloner Rx.

- 1.0 gigahertz (GHz) processor.
- Microsoft® Windows® XP, Windows Vista™, Windows 7, or Windows 8 & 8.1
- 1 gigabytes (GB) of RAM.
- 10 gigabytes (GB) of free hard disk space.
- CD/DVD-ROM drive if you need to setup from the installation CD.
- Additionally, you must have an Internet Service Provider (ISP) if you wish to activate the program over an Internet connection.

 Drive Cloner Rx is designed strictly for Windows-based PCs. Do NOT install it on servers or other operating systems such as Linux or Mac!



## Installing Drive Cloner Rx

Before installing Drive Cloner Rx close any applications that you may have running.

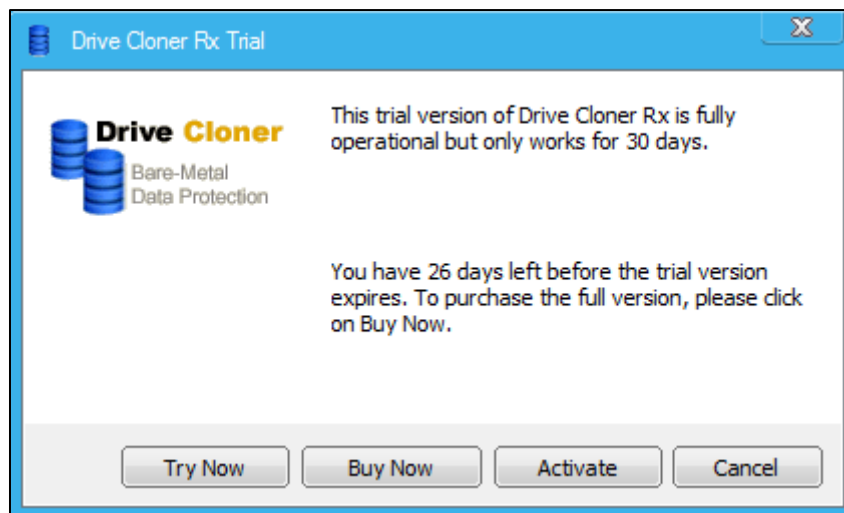
To install Drive Cloner Rx insert the installation disk or run the downloaded DriveClonerRx.exe. A Language Selection screen will appear at the start of the installation process. Click **Ok** and follow the prompts.

Next you will be greeted with a Welcome Screen. Click **Next**. Read and accept the End User License Agreement. Then click **Next**, and choose a destination folder to install the program to (default is C:\Program Files\Drive Cloner Rx).

The software will now install. Once it has completed, click **Finish**.

## Product Activation

Drive Cloner Rx contains software-based product activation technology, which means you must activate your Drive Cloner Rx installation in order to authenticate its license. You will have 30 days to do so before the software locks down its trial period.



### **Activate Drive Cloner Rx Over an Internet Connection**

If the computer on which Drive Cloner Rx is installed can connect to the Internet, you can easily activate Drive Cloner Rx by selecting the **Activate** option and then clicking the **Activate Drive Cloner Rx over Internet connection** option.

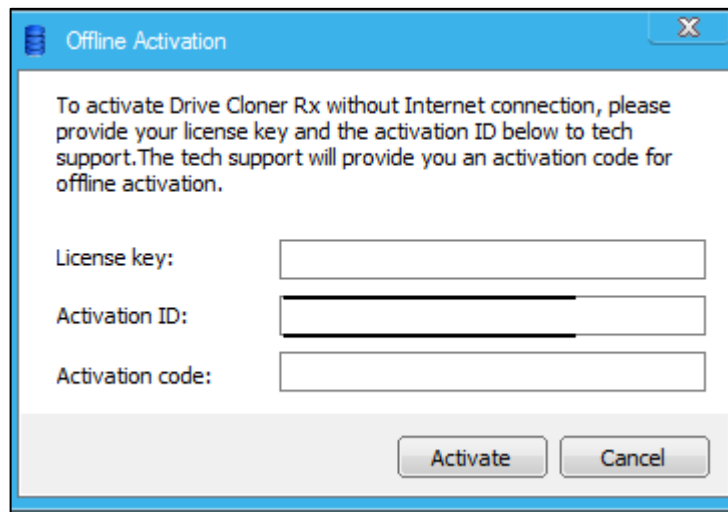
Upon purchasing Drive Cloner Rx, you will be issued a Licensed Product ID from Horizon DataSys. You can install Drive Cloner Rx with this Licensed Product ID. Copy and paste the Licensed Product ID that you received from Horizon DataSys into the License key field then click **Activate**.

\* The number of installations of Drive Cloner Rx that you can activate is limited by the number of licenses defined by the Licensed Product ID

### Activate Drive Cloner Rx Without an Internet Connection

If the computer where Drive Cloner Rx is installed doesn't have an Internet connection, you will need to do an offline activation of Drive Cloner Rx using a registration code. To complete the process follow these steps.

1. To manually activate Drive Cloner Rx, click on the **Activate** button. Then select **Activate Drive Cloner Rx without Internet connection**. Click on **Next**.



Offline Activation

To activate Drive Cloner Rx without Internet connection, please provide your license key and the activation ID below to tech support. The tech support will provide you an activation code for offline activation.

License key:

Activation ID:

Activation code:

Activate Cancel

2. In the new window you will see an **Activation ID**. Write down or copy-and-paste the **Activation ID** as well as your **Product ID/License key** and send them to Horizon DataSys tech support by fax, phone, or email at the contact information given at the end of this User Guide.
3. Horizon DataSys tech support will reply to you with an Activation Code based on the Product ID and Activation ID you provided.
4. Type this **Activation Code** into the Activation code field and click **Activate**.

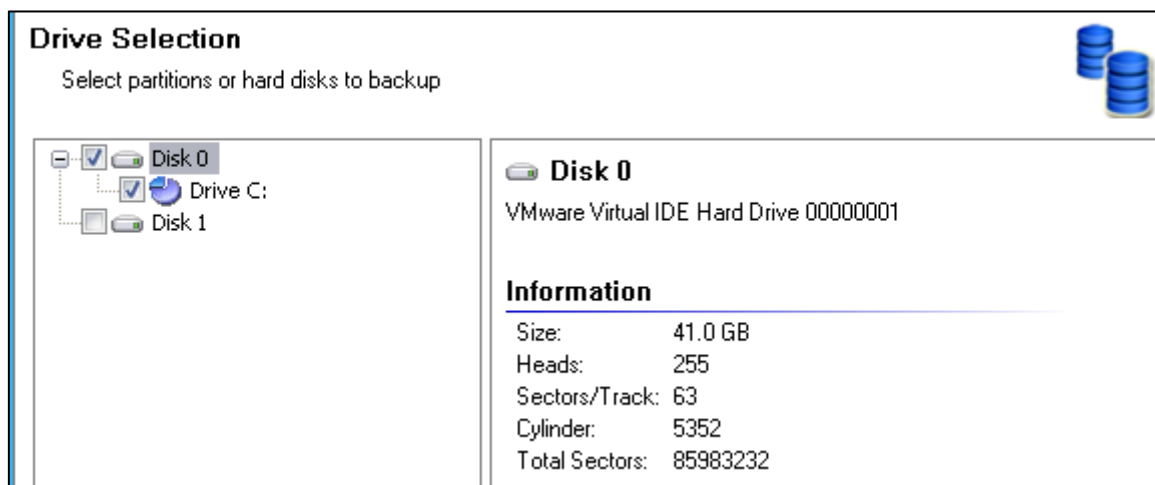
# Chapter 2: Backup Partitions, Disks, Files and Folders

## Backing Up Partitions and Disks

Creating a backup of Partitions and Disks is the primary purpose of Drive Cloner Rx. The goal is to take whatever data you want saved and store it onto an external device, keeping it safe in case something happens to the drive it was copied from. Drive Cloner Rx performs hot backups without interrupting your work in progress. All your applications will remain online during the backup process.

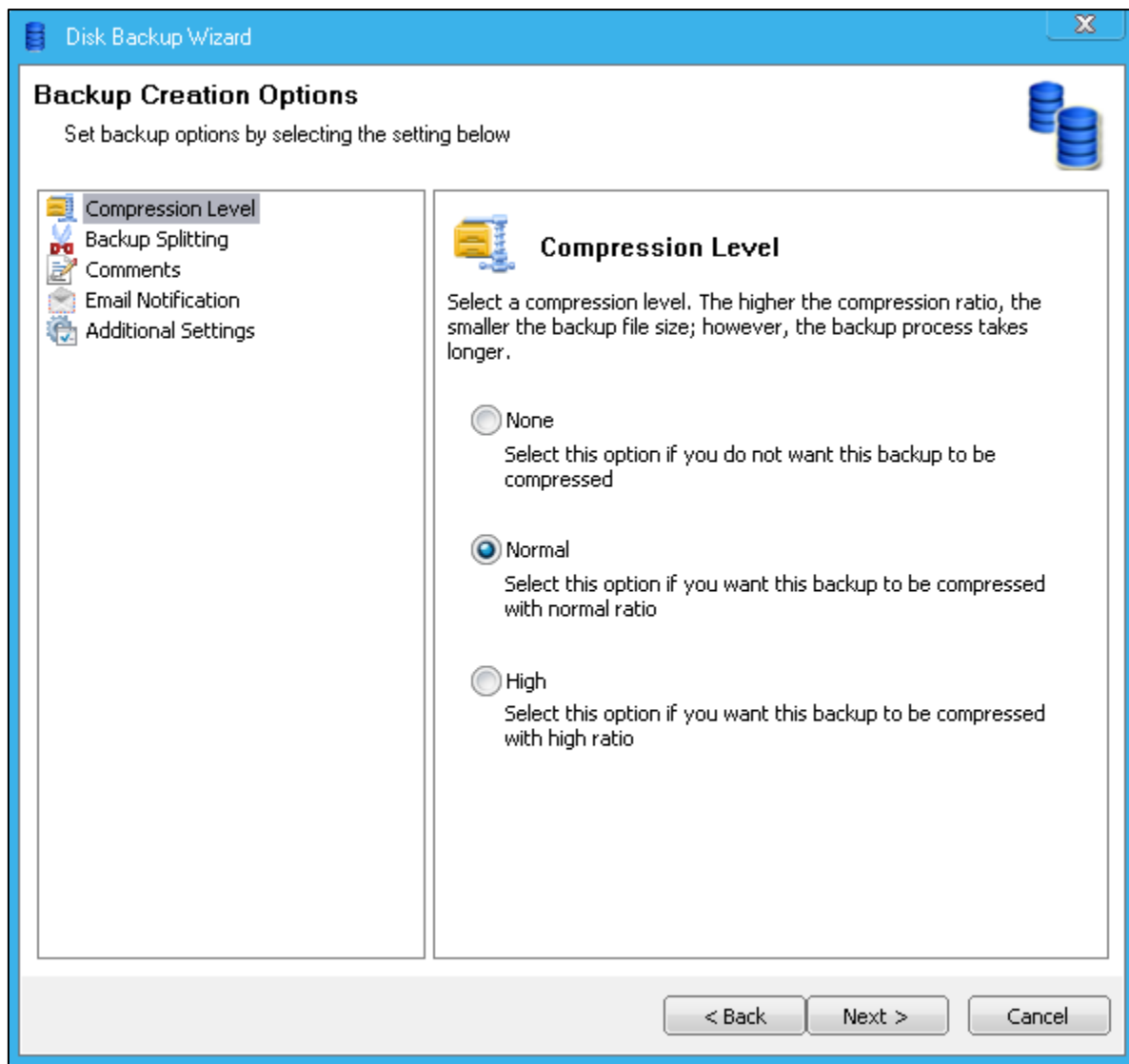
To do so successfully, please follow these steps.

1. Open Drive Cloner Rx and select **Backup Partitions and Disks**. The program will parse the disk for drive information. **If you are also using our instant recovery software, RollBack Rx, this is when Drive Cloner Rx will scan for any existing snapshots and notify the user of the option to backup the system with those snapshots.** If not, the system will proceed to the next step.



2. Select the disks/partitions you wish to have included in the backup image. Click **Next**.
3. Choose to create a **Full Backup, Incremental Backup, or Differential Backup**. If this is your first time creating a backup image, a Full Backup is required. Both Incremental and Differential Backup require a Full Backup to build off of. Once you've selected your choice, click **Next**.
4. Choose a location to store the backup image. Note that whatever drive you are taking a backup of cannot store the backup image you are creating. An external hard drive, secondary drive, or USB device is required to place the image onto. Once you have selected the appropriate folder

to place the backup image and assigned a name, click **Next**.

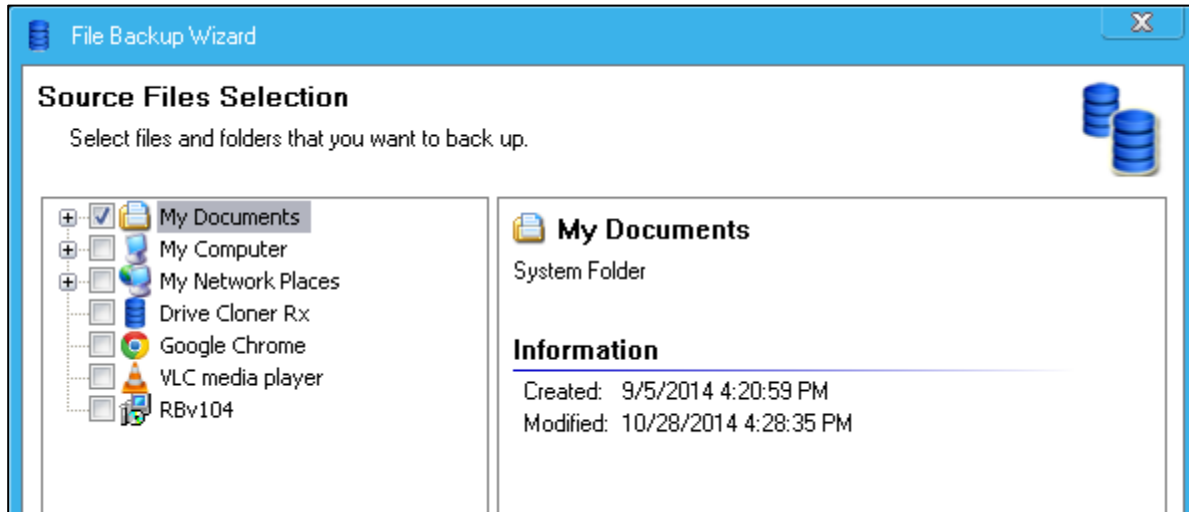


5. Choose the **Compression Level** you desire. The higher the compression level the more time it requires to create a backup image, but less hard drive space is used. If the image size is an issue you can choose **Backup Splitting** to segment the backup files into smaller pieces. At this time you may also write in any **Comments** regarding the backup, set up an **Email Notification** to notify you when the backup is complete, and choose to **Validate** the backup file at the end of its creation. Once you have selected your desired settings, click **Next**.
6. The final **Summary** page will be shown which goes over all the options you have selected. If you are happy with your choices, please click **Proceed** to start the backup process.

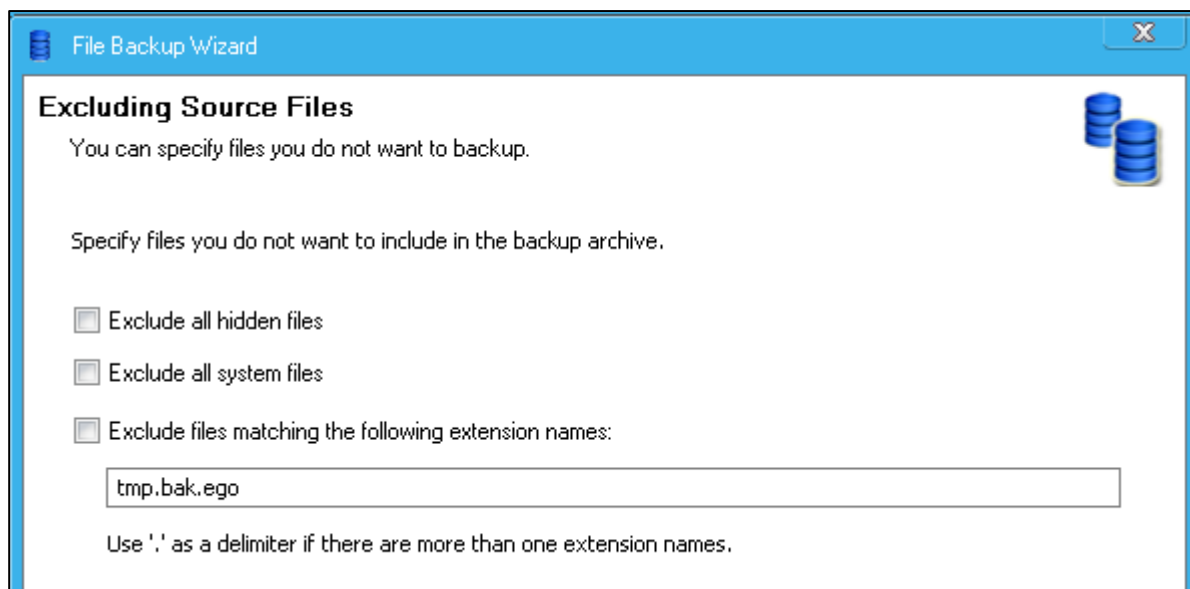
## Backing Up Files and Folders

Instead of taking an entire backup of a drive or partition, you can also have Drive Cloner Rx take a backup of specific files and/or folders.

1. Open Drive Cloner Rx and select **Backup Files and Folders**. The program will open the Welcome Screen. Click **Next** and proceed to the following window where you may select the files and folders you wish to backup.



2. Once you have selected the files and/or folders, click **Next**.
3. In this next window you may choose to exclude certain source files such as hidden or system files, or certain file extensions (i.e. .jpg, .bak, .ego). Once you are finished, click **Next**.



4. Choose to make a **Full Backup**, **Incremental Backup** or a **Differential Backup**. If this is your first time you must create a Full Backup. Both Incremental and Differential Backup require a Full Backup to build off of. Once you've selected your choice, click **Next**.
5. Choose a location to store the backup image. Note that whatever drive you are taking a backup of

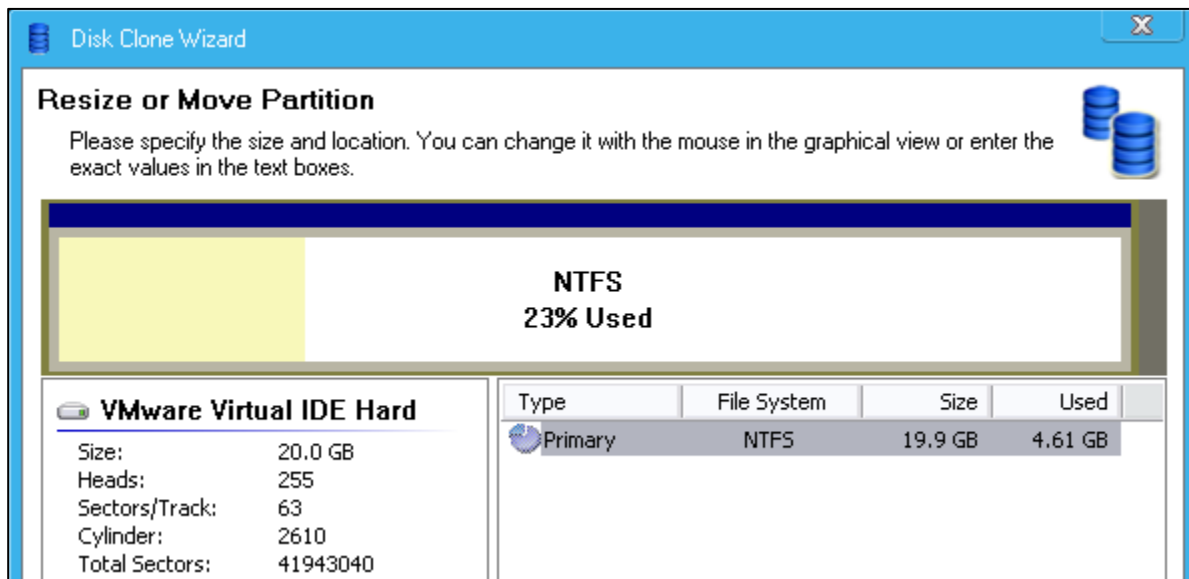
cannot store the backup image you are creating. An external hard drive, secondary drive, or USB device is required to place the image onto. Once you have selected the appropriate folder to place the backup image and assigned a name, click **Next**.

6. Choose the **Compression Level** you desire. The higher the compression level the more time it requires to create a backup image, but less hard drive space is used. If image size is an issue you can choose **Backup Splitting** to segment the backup files into smaller pieces. You may also write in any **Comments** regarding the backup, set up an **Email Notification** to notify you when the backup is complete, and choose to **Validate** the backup file at the end of its creation. Once you have selected your desired settings, click **Next**.
7. The final **Summary** page will be shown which goes over all the options you have selected. If you are happy with your choices, please click **Proceed** to start the backup process.

## Clone Hard Disk

Drive Cloner Rx has the capability to not just backup files, partitions, disks and folders, but make a clone of an entire drive.

1. Open Drive Cloner Rx and select **Tools & Utilities**. From the drop-down menu, select **Clone Hard Disk**.
2. You will be greeted by the Welcome Screen. Click **Next**. In the following window select the source disk or partition you wish to clone. Once you have made your selection, click **Next**.
3. Choose the destination to copy the clone to. You must choose a separate drive from the one you are cloning. Click **Next**.



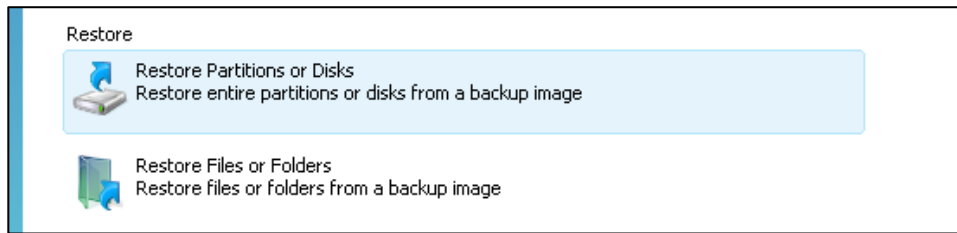
4. Before cloning, you may choose to reformat or resize the destination drive. Click **Resize/Move** to do so, inputting the new variables you prefer and select **Ok**. Once this process is done, click **Next** to proceed.
5. Review the Summary page. If you are pleased with your selections click **Proceed** to begin cloning.

# Chapter 3: Restoration

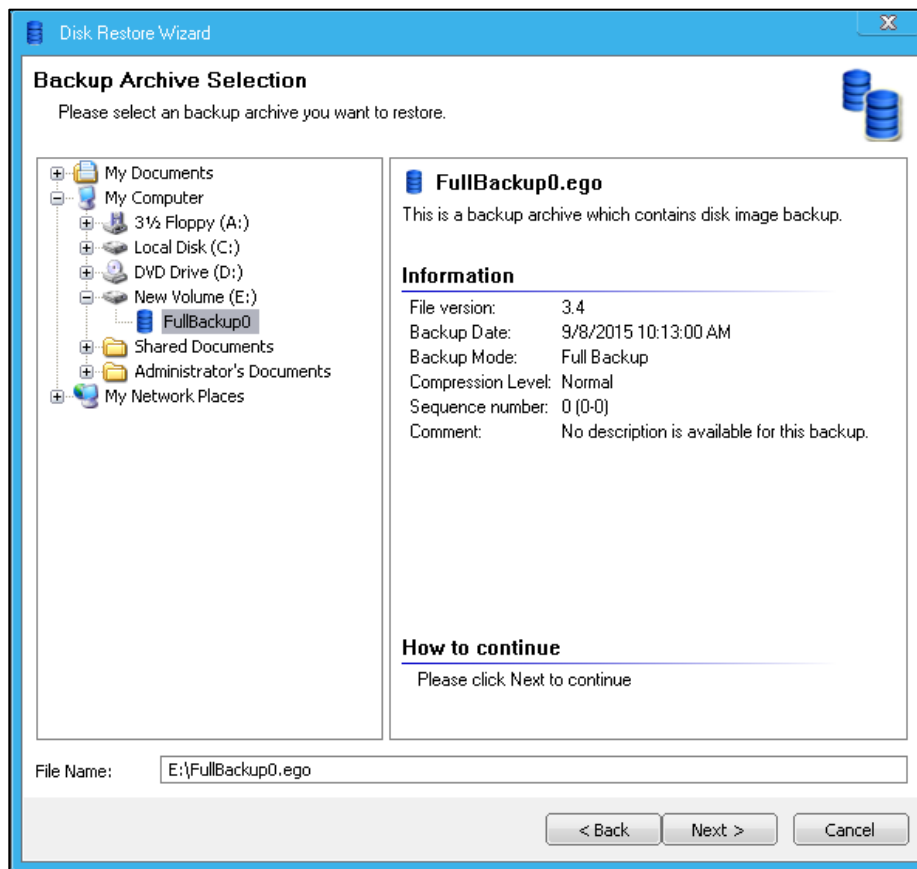
## Restoring Partitions or Disks

If your computer is no longer accessible due to corruption of the computer's file system or system files and you have previously created a disk image file, you will be able to use the image file to restore the entire computer. Even if the hard disk is physically damaged, you can use the image file to restore the entire system to a new hard disk.

1. Open Drive Cloner Rx and from the Home screen select **Restore Partitions or Disks**.

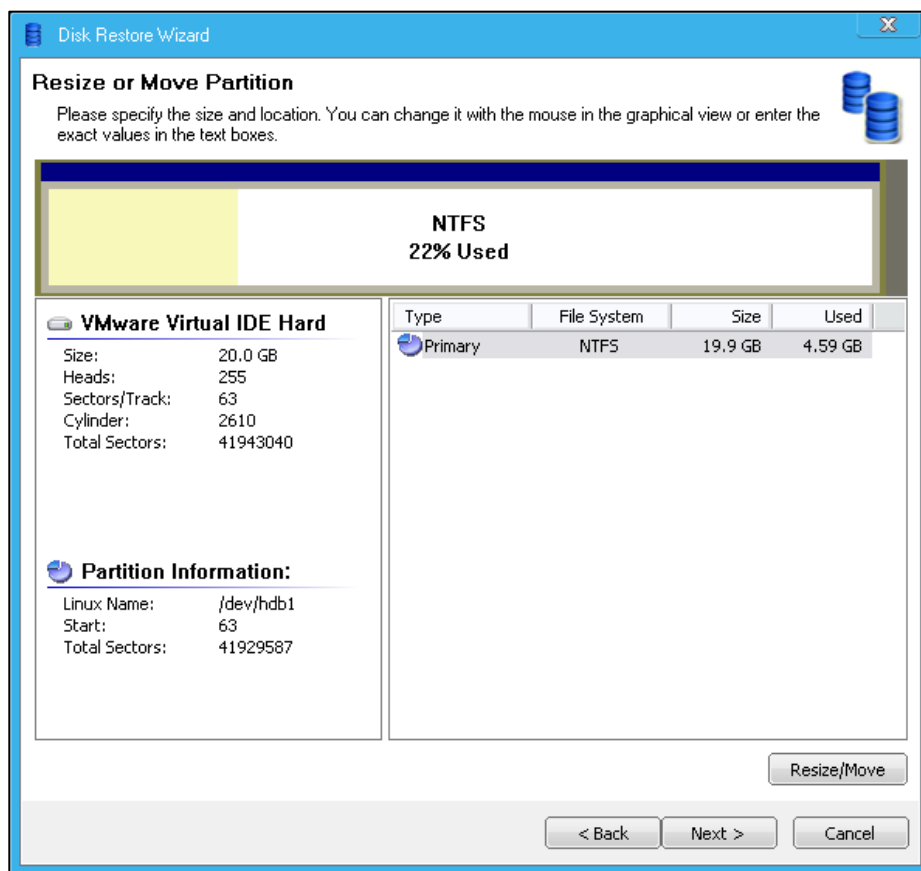


2. After the software parses the disk for information, the program will open the Welcome Screen for the **Disk Restore Wizard**. Click **Next**.
3. From the **Backup Archive Selection** menu, locate the backup image you have stored. Select the image you want to restore from. Click **Next**.



4. Select the backup date you wish to load. Click **Next**.

5. Select the Partition or Disk to restore from. Click **Next**.
6. Select the destination Partition or Disk to restore to. You may also choose to do a **Sector by Sector** restore. This option allows the user to restore the Partition or Disk from the image by placing information onto the drive in an exact Sector by Sector copy. Click **Next**.
7. In this menu, you may choose to specify the size and location of the destination partition. Click **Next**.



8. Review the **Summary** page. If you are happy with your selections, click **Proceed**. The program will now restore the drive and/or partition using the image.

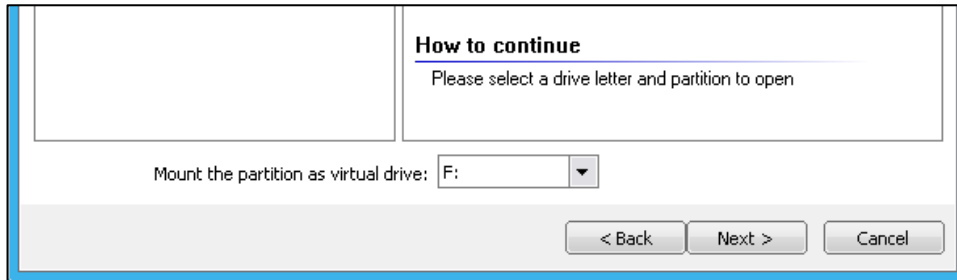
## Restoring Files and Folders

Drive Cloner Rx offers the option to restore files or folders instead of the entire drive. This allows you to load previous documents as needed, instead of relying on a full backup installation.

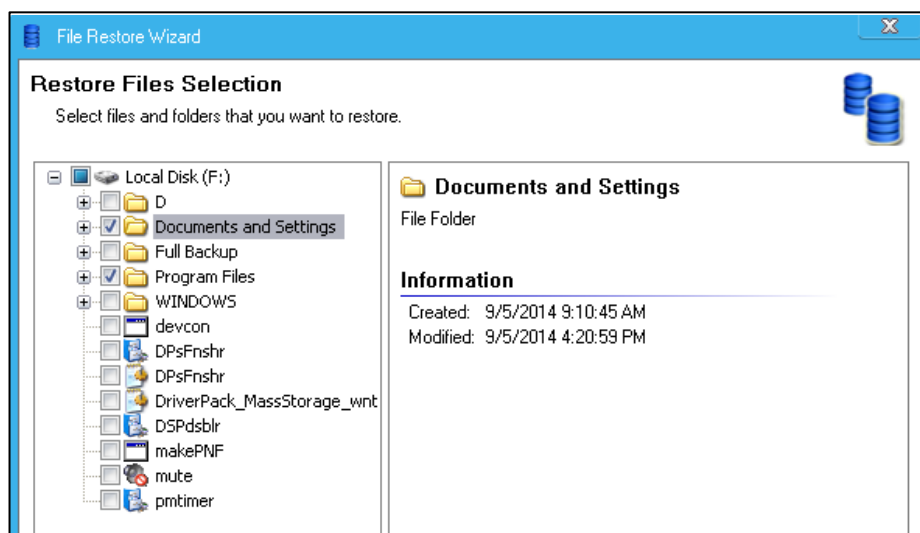
1. Open Drive Cloner Rx and from the Home screen select **Restore Files or Folders**. After the Welcome Screen opens, click **Next**.
2. In the **Backup Archive Selection** menu select the backup image you wish to load the files or folders from. Once you have done so, click **Next**.
3. Select the backup date you wish to load. Click **Next**.



- Assign the disk a letter and mount the image you are loading as a virtual drive. This will allow you to select the files and folders specifically you wish to restore in the next screen. Click **Next**.



- Select the **Files or Folders** you wish to restore. Click **Next**.



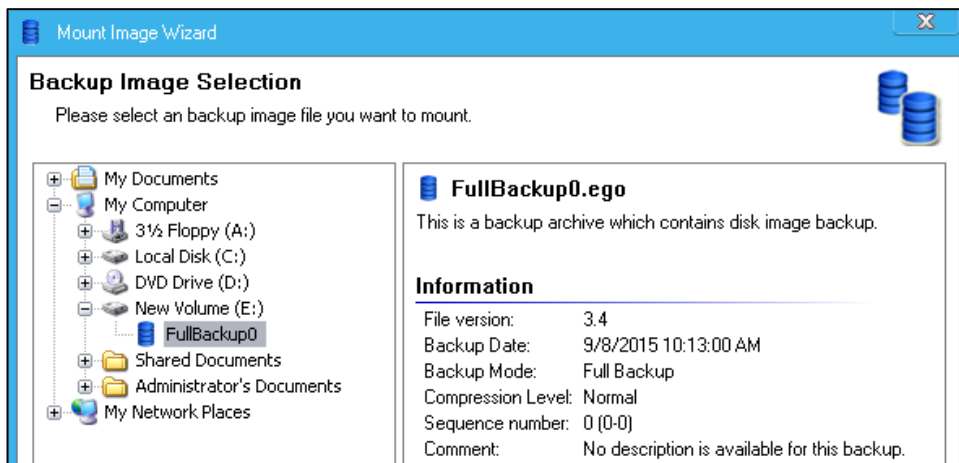
- Choose the destination folder to restore to. You may select to restore the files to their original location, which will overwrite any existing files in the same location. You may also select a new location to restore the data to. Click **Next**.
- If you have chosen a new location, please select the destination to restore to. Click **Next**.
- Select to overwrite existing files with the restored files, or to overwrite only if the file is older than the new one, or to not overwrite at all. Click **Next**.
- Review the **Summary** page. If you are happy with the selections, click **Proceed**.
- The software will now restore the **Files or Folders** you have selected.

# Chapter 4: Exploring Backup Images

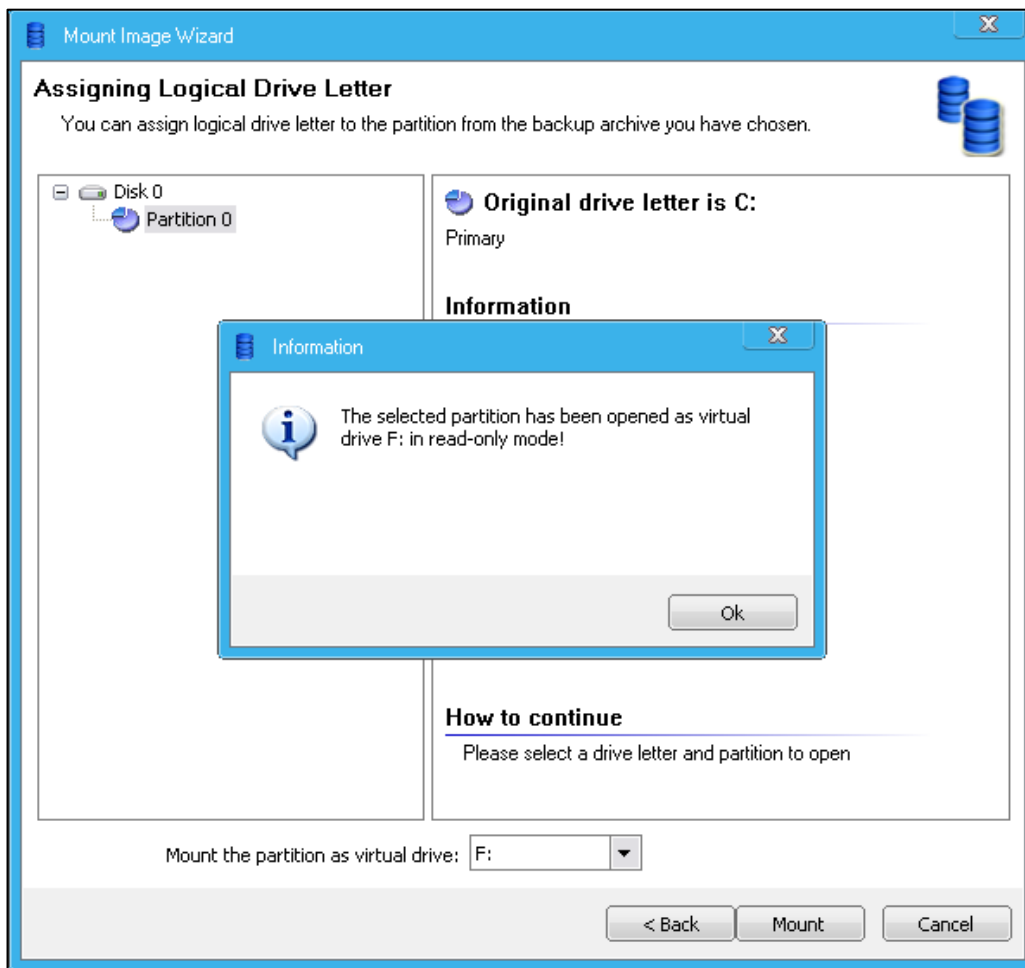
## Open Backup Image

Instead of installing a full backup of a partition, disk, file or folder, you may also choose to mount any backup image you have created with Drive Cloner Rx as a virtual drive. This allows you to explore the drive as if it were any other drive, and drag and drop any data you wish to store to your desired destination.

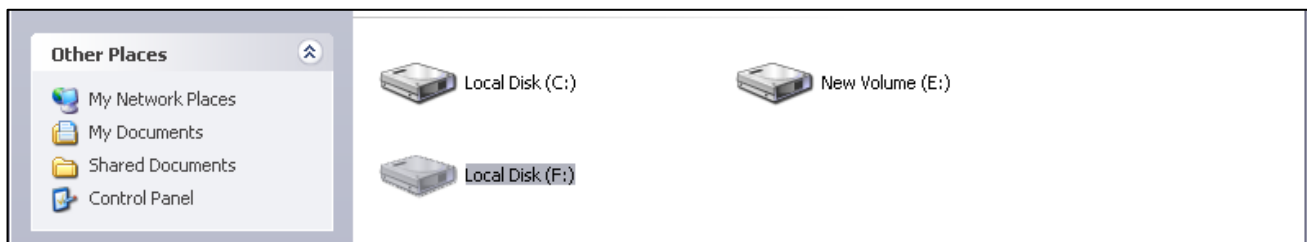
1. Open Drive Cloner Rx and from the Home screen select **Open Backup Image**.
2. Once the Welcome Screen opens, click **Next** to continue.
3. In the **Backup Image Selection** menu please select the backup image you wish to mount. Once you have located the image and selected it, click **Next**.



4. Select the **Backup Date Selection**. Click **Next**.
5. Assign the image a virtual drive letter. Click **Mount**.



- Once the backup image is mounted, open Windows Explorer and open the mounted image. In this example, it is labeled as Local Disk (F:).



- Open the image and explore away! You may drag and drop any data onto your desired drive from this menu.
- Once you have finished exploring the image, open Drive Cloner Rx and from the Home screen click **Close Backup Image**. It will ask you to confirm your selection. Click **Ok**. The virtual drive will now be closed.

## Validating Backup Images

To ensure a backup image you have stored is safe to use you can choose to **Validate** the backup image first.

1. Open Drive Cloner Rx and select **Tools & Utilities**. From the drop-down menu select **Validate Backup Image**.
2. Once the Welcome Screen opens, click **Next**.
3. From the **Backup Archive Selection** menu, search for the backup image you wish to validate. Once you have selected the image, click **Next**.
4. Choose the **Backup Date** you would like the operation to scan. Click **Next**.
5. The software will now scan and validate the image.

# Chapter 5: Create Recovery Media

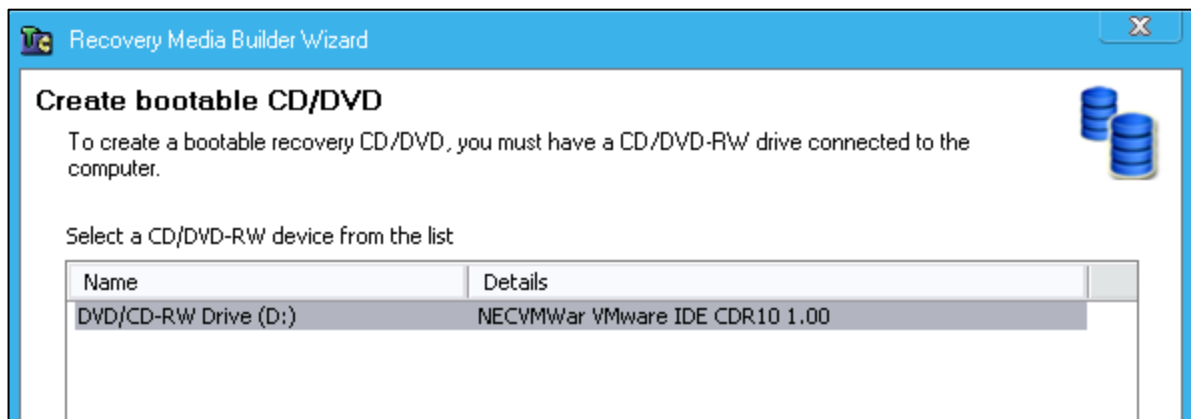
Drive Cloner Rx will allow you to create a bootable recovery media device to restore the drive in case of system failure. You may choose to create the recovery device as a Bootable CD/DVD, ISO, or a Bootable USB.



## Bootable CD/DVD

To create a **Bootable CD/DVD** you must have a CD/DVD-RW drive connected to the computer with a blank disc inserted.

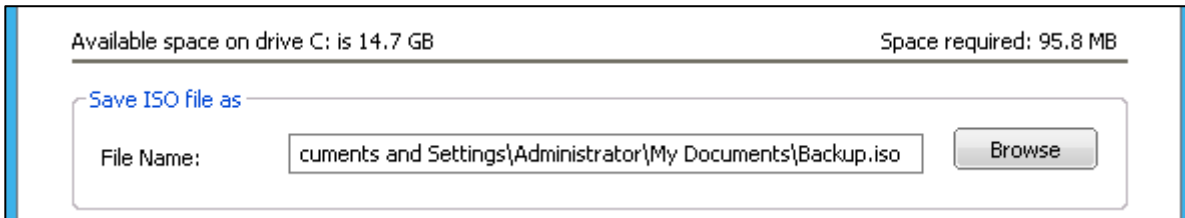
1. Select Bootable CD/DVD from the Create Recovery Media tab.
2. Select the DVD/CD-RW Drive for the program to scan. Click **Next**.



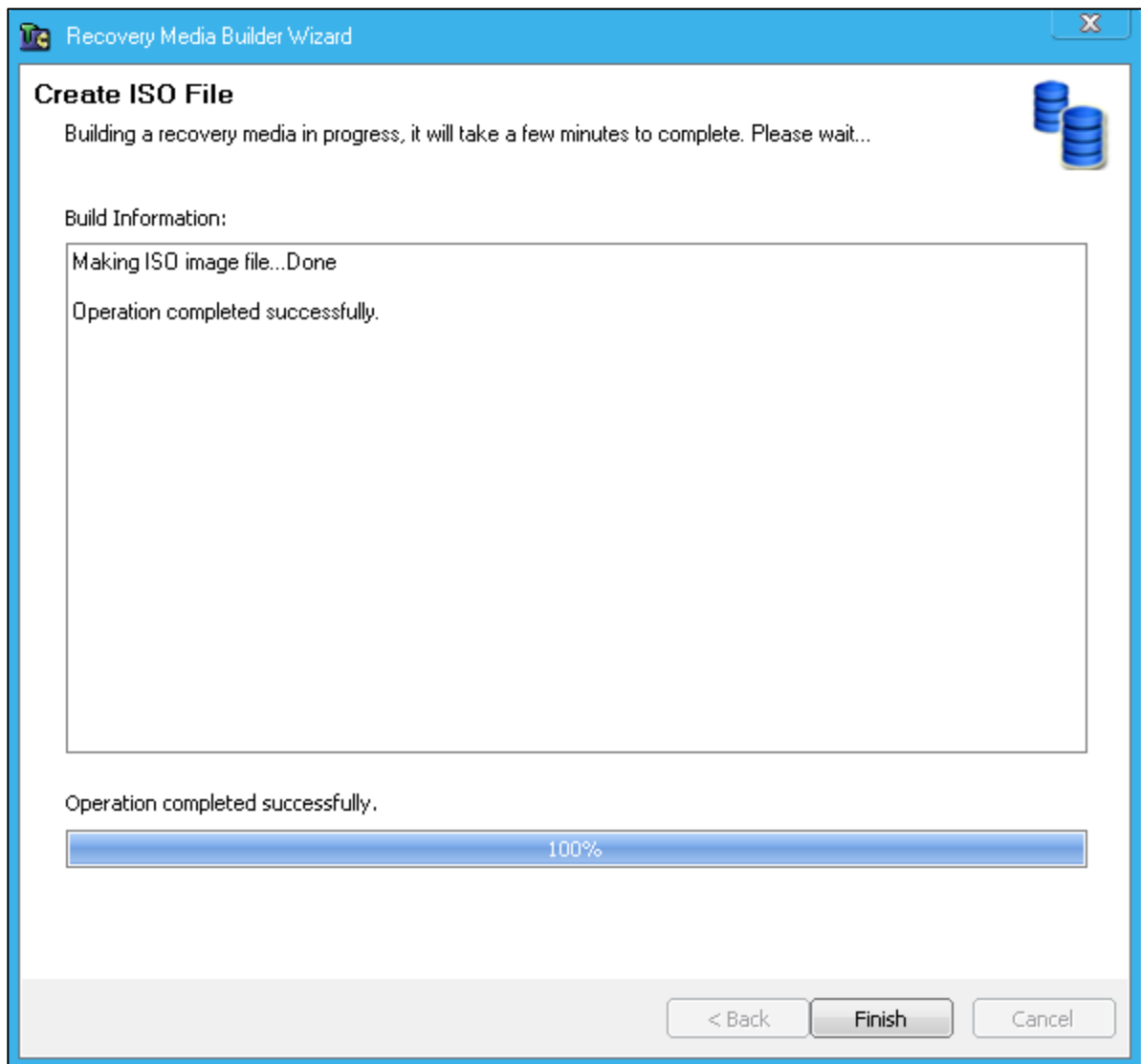
3. The program needs a temporary location to create the backup. Select and/or create a free folder for this space.
4. You may choose to include backup image files (should you have them) in the recovery media as well. This will allow you to boot and load the backup from the same media. Once you have made your choice, click **Next**.
5. The drive will prepare itself. Once this finishes, select the CD/DVD. Assign a name, and click **Next**. The Bootable CD/DVD will then be created.

## ISO File

1. Go to the Create Recovery Media tab and choose ISO File.
2. Click **Browse** and select a destination to save the ISO file. Name the file and click **Save**.



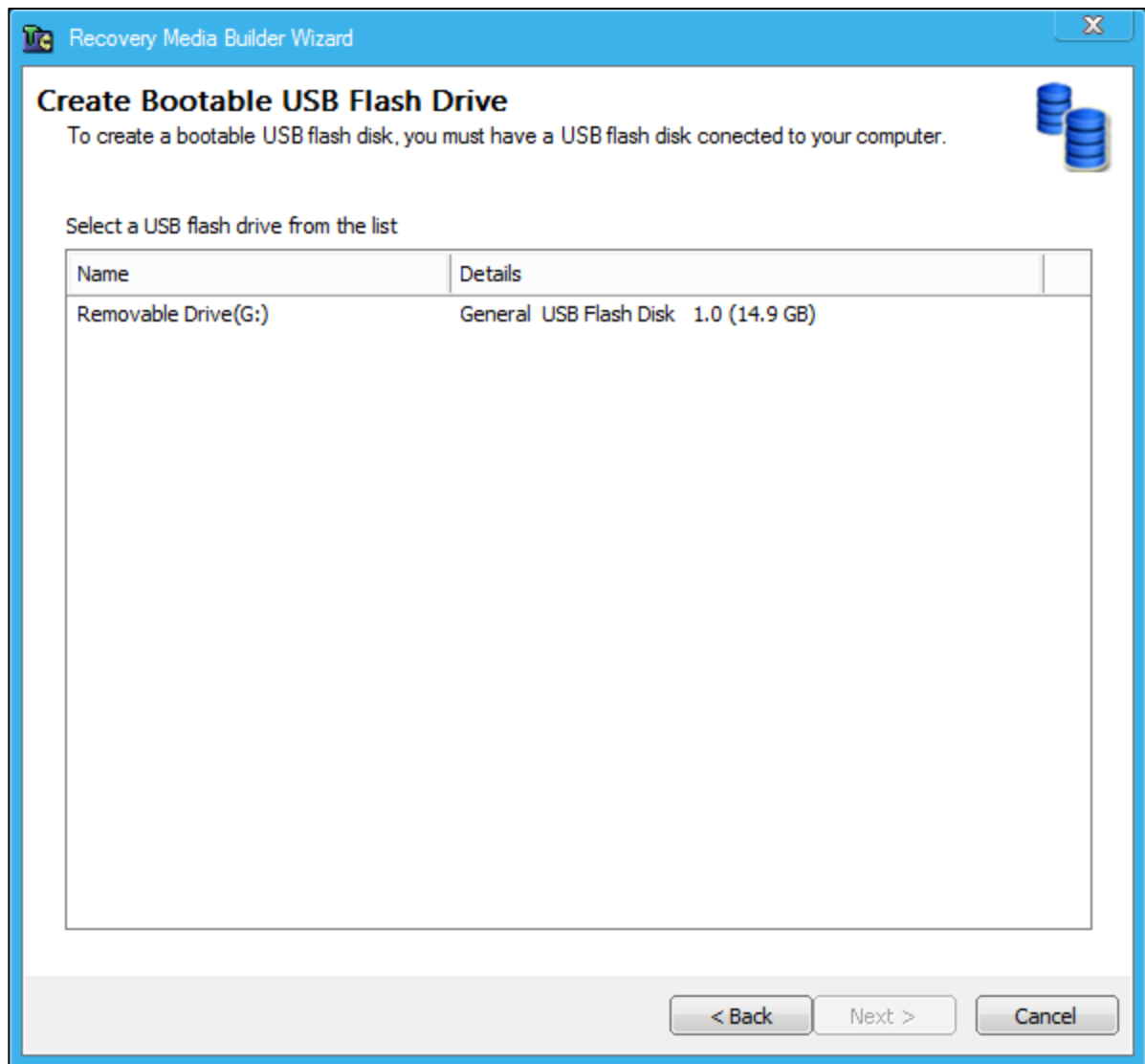
3. Choose to include any backup image files (should you have them) into the ISO file. Click **Next**.
4. The ISO file will be created.



5. Click **Finish**. The ISO file is now ready.

## Bootable USB Flash Drive

1. Select **Bootable USB Flash Drive** from the Create Recovery Media tab.
2. With a USB drive plugged in, select the flash drive from the list. Click **Next**.



3. If your USB is FDD-type disk you will need to partition and format it. You can do so by selecting **Format**. If not, click **Next** to continue on.
4. Review the Summary page and ensure the correct drive and size required for the Bootable device to be created. Once you have done so, click **Next**.
5. The program will now create the Bootable USB Flash Drive. When the process is complete, click **Finish**.



# Chapter 6: Uninstalling Drive Cloner Rx

You can uninstall Drive Cloner Rx from your computer from the **Control Panel**.

1. Open Control Panel and go to Add or Remove Programs. Select Drive Cloner Rx and click **Change/Remove**. Click **Yes** to run the uninstall.

# Chapter 7: Product Limitations

## Terms and Conditions

The information contained in this User Guide is subject to change without notice. Horizon DataSys assumes neither responsibility nor obligation of any kind for any errors contained herein nor does Horizon DataSys assume any liability in connection with the furnishing, performance, and use of this document.

### **Trademarks or Service Marks**

Drive Cloner Rx is a registered trademark of Horizon DataSys Corporation in the U.S.A. Other brands and products are trademarks of their respective holders.

### **Copyright**

This document is a copyright © 2015 by Horizon DataSys Corporation. All rights reserved. No part of this document may be reproduced in any form, including creating facsimiles, altering, translating into another language, transmitting, or distributing without the expressed prior written authorization of Horizon DataSys Corporation.

### **License and Warranty**

Drive Cloner Rx and other trademarked names and references are the exclusive property of Horizon DataSys, Inc. and are protected by international copyright laws. You have certain rights and permissions for the legal use this document and the Drive Cloner Rx software after your acceptance of these Terms and Conditions outlined in the Drive Cloner Rx End User License Agreement.

### **You May**

- Install only one copy of the software under one license.
- Make only one copy of the software for archival purposes.
- Transfer the software on a permanent basis to another entity, provided that you retain no copies of the software.

### **You May Not**

- Rent or lease any portion of the Drive Cloner Rx software.
- Reverse engineer, decompile, disassemble, modify, translate, make any attempts to cover the source code of the software or create derivative works from the software.
- Attempt to install and activate this software on any more individual nodes than the number of license keys that you are granted by your legally purchased keys.
- Use a previous license key or key set of the software after you've received a replacement key or key set for an upgraded version of the software.

### **Limited Warranty**

If you opted to purchase the Media CD Pack: Horizon DataSys Corporation guarantees that the Media CD Pack on which the software is distributed will be free from defects for a period of thirty (30) days from the delivery date of the software. Subsequent to this guarantee period, Horizon DataSys does not extend any further assurance that the CD-ROM contents will be free of incidental degradations or that the software contained therein will be error-free.

### **Disclaimer of Damages**

In no event does Horizon DataSys assume any liability or indemnity for any special, consequential, indirect,

or similar damages, including but not limited to, any lost profits or lost data arising out of the use or inability to use the software even if Horizon DataSys has been advised of the possibility of such aforementioned damages prior to their occurrence. In no circumstance does Horizon DataSys' liability, accountability, or responsibility exceed the purchase price for the software.

## Limitations

### **The following limitations still exist in Drive Cloner Rx**

**Hard Disk Support** – Drive Cloner Rx can only protect up to four IDE/SATA/PATA hard drives. If a system has more than four hard disks, Drive Cloner Rx will protect the first four drives designated as the Disk0, Disk1, Disk2, and Disk3 hard drives. Drive Cloner Rx does not support SCSI, RAID, or mirroring hard drive configurations.

**Booting From an External Media (OS)** – Drive Cloner Rx cannot protect the hard drive when changes are made to the hard drive from an external or foreign (non-Windows) operating system bypassing the Drive Cloner Rx protection drivers. For example, booting from a CD-ROM or USB that starts a different OS that may be able to change the hard drive and produce unpredictable results.

**Disk Encryption Programs that Intercept Low-Level Disk I/O** – Drive Cloner Rx may conflict with some applications that proxy low-level disk I/O such as certain anti-virus programs, encryption software, and imaging software.

**Disk Repartitioning** – The hard disk on which Drive Cloner Rx is installed cannot be re-partitioned without uninstalling Drive Cloner Rx first.

**Changing the Version of the OS Updates** – You can't upgrade to a new version of Windows (i.e. from Windows 7 to Windows 8) while Drive Cloner Rx is installed. Some in-version OS upgrades, such as up to Windows 8.1 also require Drive Cloner Rx to be uninstalled first. If you're uncertain please contact us.

**Dual-Boot of Windows and Linux OS on the Same Hard Drive** – Drive Cloner Rx does not support systems that have multiple Windows Operating Systems with non-Windows OS (such as Linux or Mac OS) loaded on the same hard drive.

# Chapter 8: Support Resources

Horizon DataSys is committed to providing exceptional customer support and exemplary technical service to all our customers. Our goal is to provide you with professional and timely assistance in the use of our software through a variety of methods including user documentation, online troubleshooting, telephone service, and personal account management. If you are experiencing an issue please first read our Frequently Asked Questions (FAQ) section of our website or other product-specific documentations. Links for other useful resources are also provided here:

[Click here to access the FAQ](#)

[Click here to access the Drive Cloner Rx Community Forum](#)

If you're still not able to find answers to your questions in the Drive Cloner Rx FAQ and the Community Forum, you can go to Horizon DataSys' website support page for more product related documents, white papers, and other information. You can also submit an online support ticket to the Horizon DataSys technical support team through our online support forum:

[Click here to file a Support Ticket](#)

If you need specific information related to our product that cannot be found online. Please contact us using any of the following methods:

E-mail: [support@horizondatasys.com](mailto:support@horizondatasys.com)

Live Chat: Available during business hours (click Chat Now icon at the top of our website) Telephone Numbers:

**Canada:**

1100 - 1200 West 73rd Ave  
Vancouver, BC V6P 6G5  
Canada  
Toll: (800) 496-0148 ext. 1  
Intl: (604) 324-0797  
Fax: (604) 608-3390

**USA:**

1685 H Street #846  
Blaine, WA 98230 USA  
Toll: (800) 496-0148 ext. 3  
Fax: (360) 233-0466

**Europe:**

483 Green Lanes London, UK N13-4BS  
Tel: (44) 20-35149804  
Fax: (44) 20-35149804

**International:**

Melbourne, Australia:	(61)3-865-21961	Jerusalem, Israel:	(972)2-3721-075
Buenos Aires, Argentina:	(54)11-51993556	Mexico City, Mexico:	(1)800-681-6746
Brasilia, Brazil:	(55)61-40421271	Lima, Peru:	(511)708-5355
Bogota, Colombia:	(57)1-3819331	Madrid, España:	(34)91-1898-193
Hong Kong, China:	(852)300-85705		